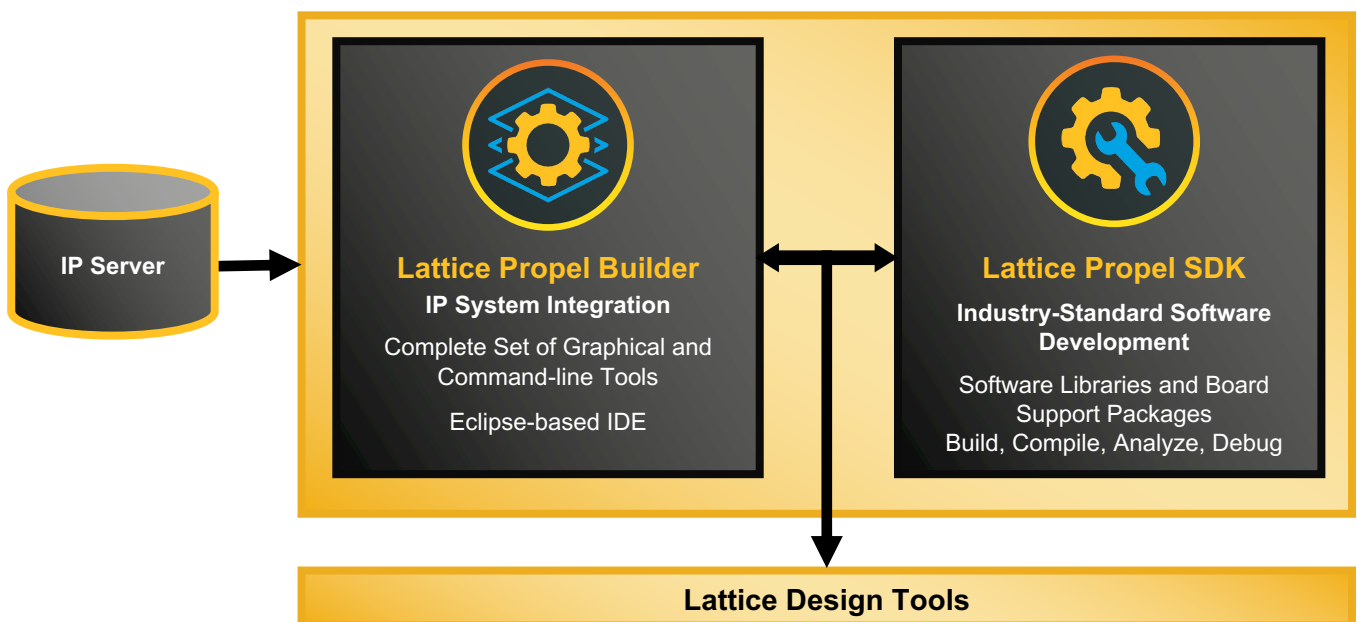


Build FPGA-Based Processor Systems in Minutes

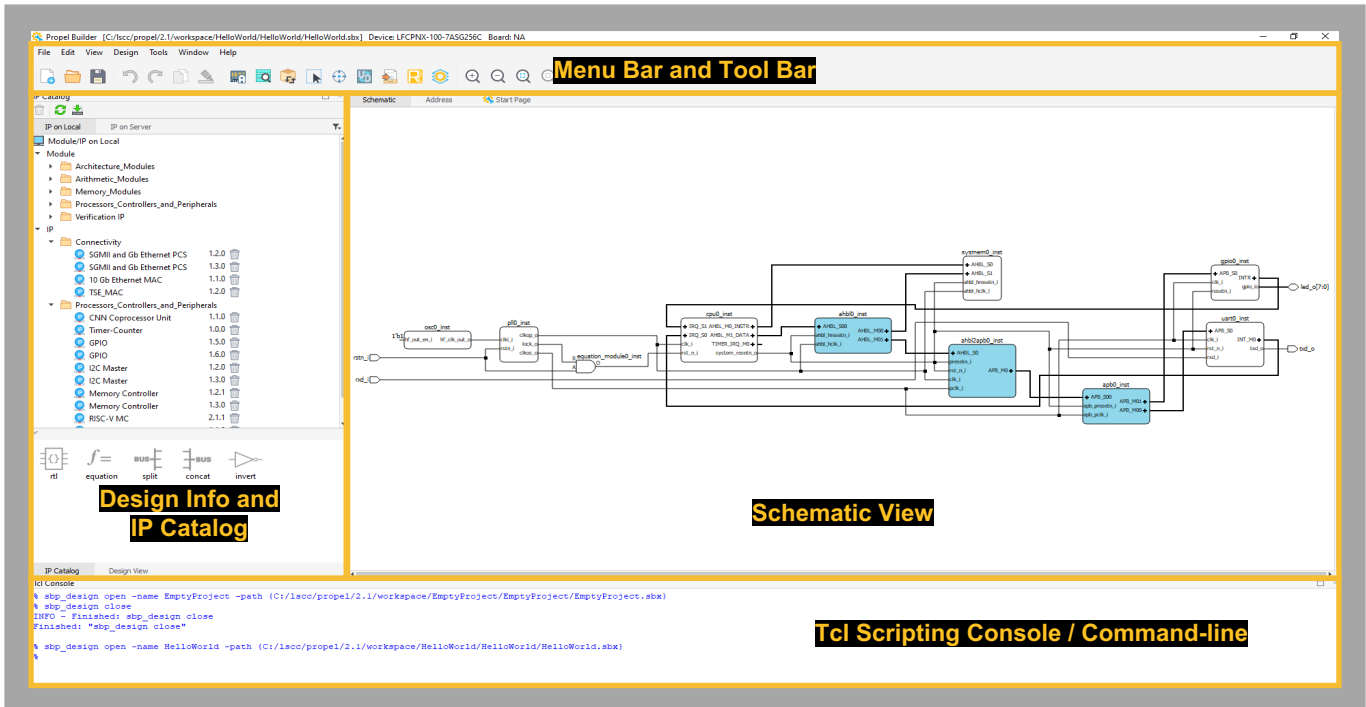


FPGA designs are increasingly adapted to the ever-changing requirements of modern electronics. Among popular applications such as server platform security, artificial intelligence (AI), and embedded vision image processing, small form-factor FPGAs with processing capabilities have gained tremendous popularity. Small form-factor FPGA devices can quickly and easily be deployed for specialized applications with a combination of both high-speed digital logic and software-based control systems.

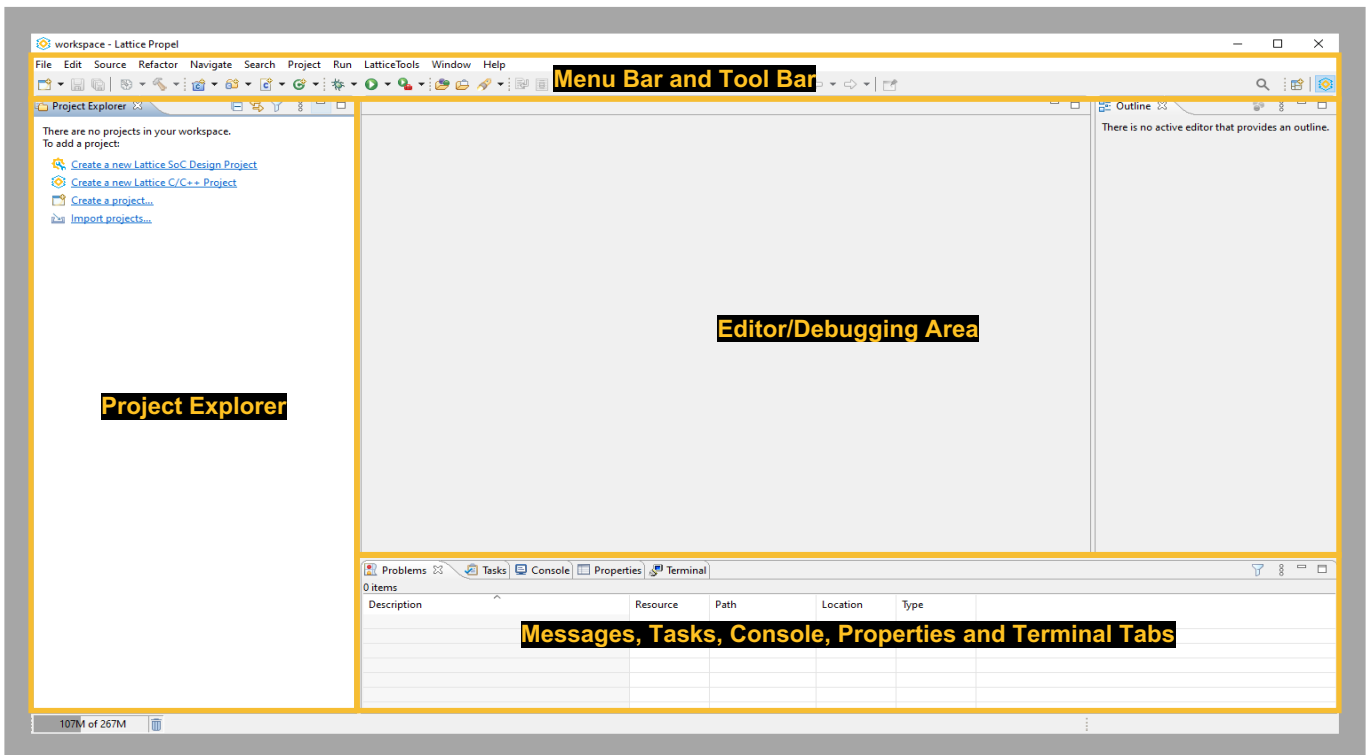
Lattice Propel is a complete set of graphical and command-line tools to create, analyze, compile, and debug both the hardware design of an FPGA-based processor system, and the software design for that processor system.



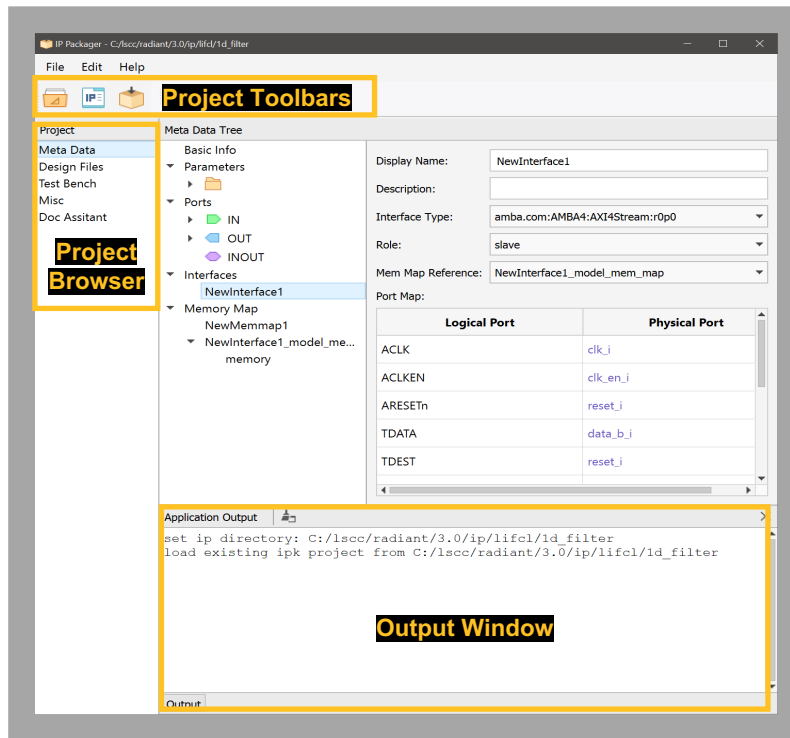
Lattice Propel Builder Tool Interface



Lattice Propel SDK Tool Interface

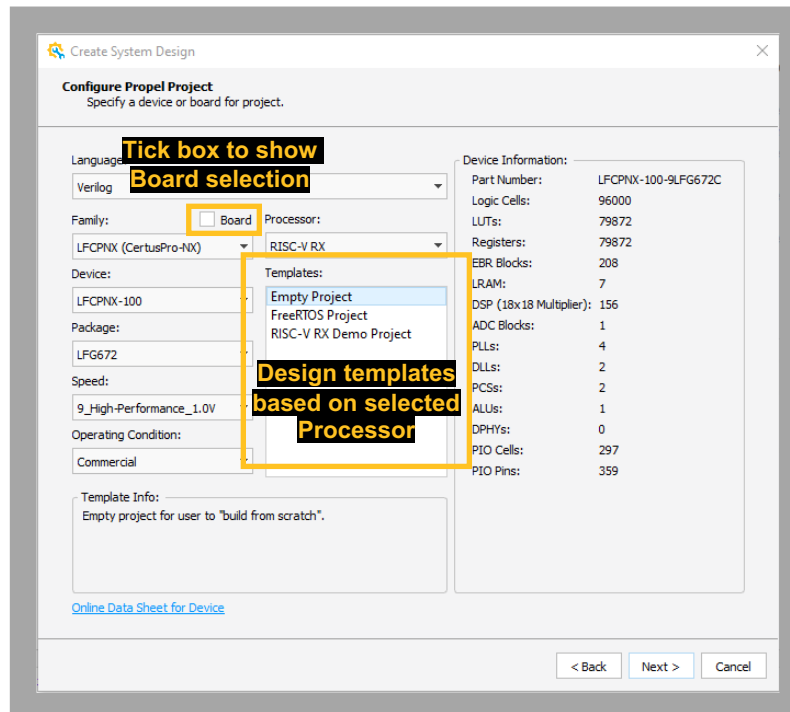


IP Packager Tool

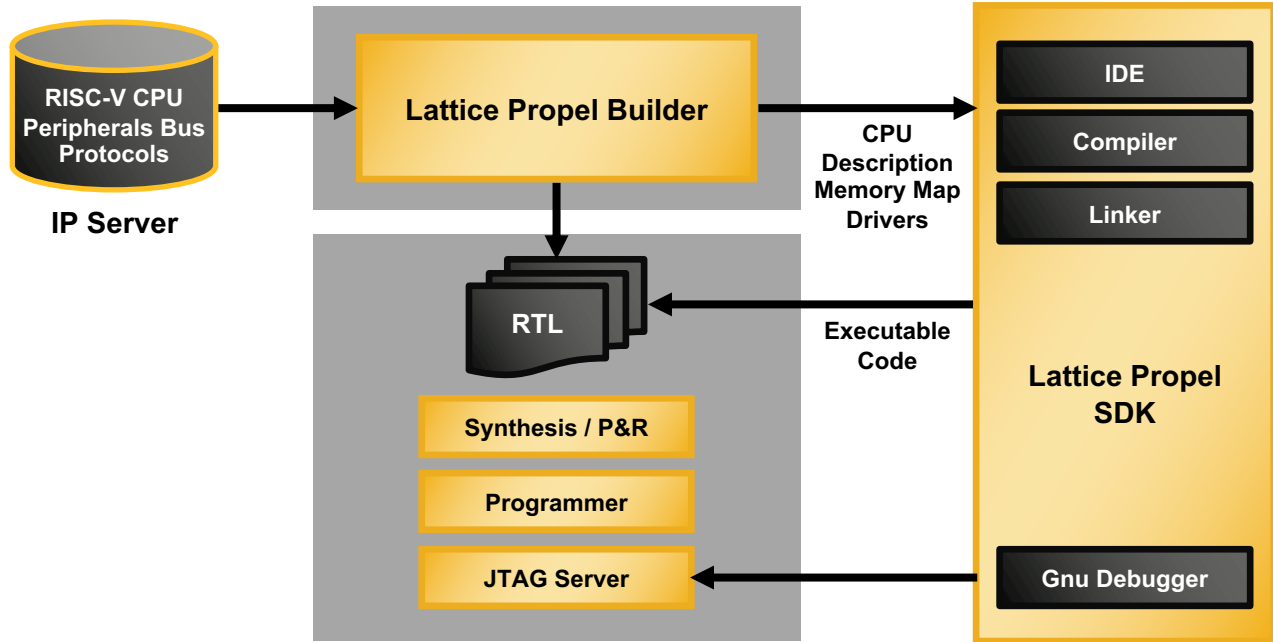


- Package IP for import into Propel Builder and Radiant
- Include drivers, testbench files and constraints
- Doc Assistant to create HTML
- Add Interface (AMBA)
- Import Memory Map
- IP Preview

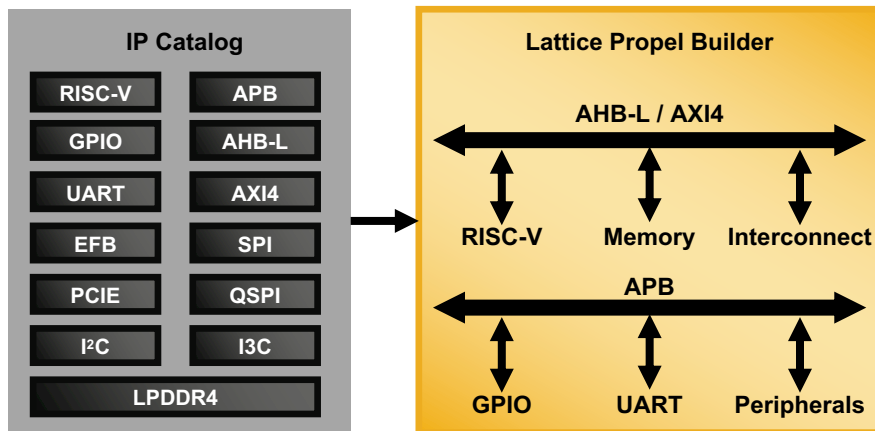
Built-in Project Templates



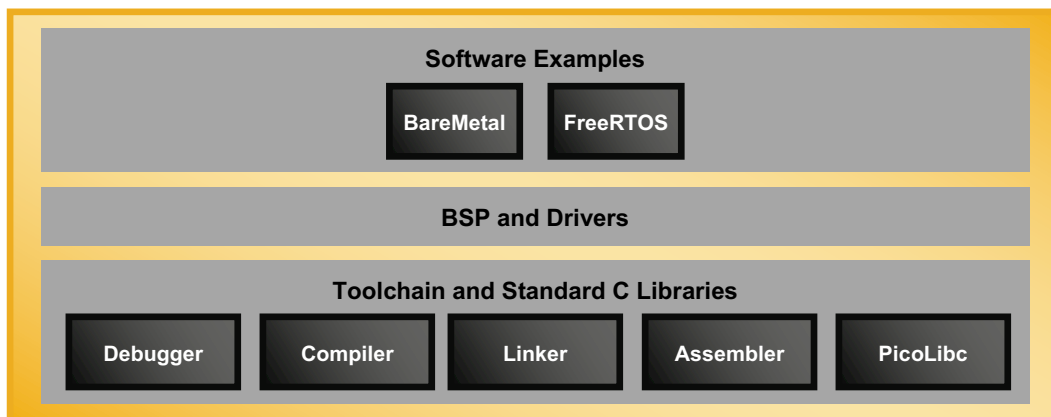
Lattice Propel Design Environment Block Diagram



Lattice Propel Builder Design Flow



Lattice Propel SDK Software Stack



Note: FreeRTOS is only supported with RX CPU

Lattice Propel IP Cores

IP Name (Processors, Controls & Peripherals)	Mach-NX	MachXO2 / MachXO3	MachXO3D	CrossLink-NX	Certus-NX	CertusPro-NX	MachXO5-NX (Control)	CrossLink-NX-33
AXI4 to AHB-Lite Bridge	-	-	-	-	-	✓	✓	-
AXI4 to APB Bridge	-	-	-	-	-	✓	-	-
AXI4 Interconnect	-	-	-	-	-	✓	-	-
CNN Coprocessor Unit	-	-	-	✓	✓	✓	-	✓
Lattice Sentry PLD Interface for Mach-NX	✓	-	-	-	-	-	-	-
Lattice Sentry Embedded Security Block Mux	-	-	✓	-	-	-	-	-
Timer-Counter	-	-	-	✓	✓	-	-	✓
GPIO	-	-	✓	✓	✓	✓	✓	✓
Lattice Sentry I ² C Filter	✓	-	✓	-	-	-	-	-
I ² C Controller	-	-	-	✓	✓	✓	✓	✓
I ² C Target	-	-	-	✓	✓	✓	✓	✓
Lattice Sentry I ² C Monitor	-	-	✓	-	-	-	-	-
I ³ C Controller	-	-	-	✓	✓	✓	✓	✓
I ³ C Target	-	-	-	✓	✓	✓	✓	✓
Internal Flash Controller for MachXO5-NX	-	-	-	-	-	-	✓	-
Memory Controller	-	-	-	-	-	✓	-	-
Lattice Sentry QSPI Primary Streamer	-	-	✓	-	-	-	-	-
Lattice Sentry QSPI Monitor	-	-	✓	-	-	-	-	-
RISC-V MC	-	✓	✓	✓	✓	✓	✓	✓
RISC-V RX	-	-	-	-	-	✓	-	-
RISC-V SM	-	✓	✓	✓	✓	✓	✓	✓
SPI Flash Controller	-	-	-	✓	✓	✓	✓	✓
SPI Primary	-	-	-	✓	✓	✓	✓	✓
SPI Secondary	-	-	-	✓	✓	✓	✓	✓
UART 16550	-	-	-	✓	✓	✓	✓	✓
PCI Express Gen 1	-	-	-	✓	✓	-	-	-

IP Name (Connectivity)	Mach-NX	MachXO2 / MachXO3	MachXO3D	CrossLink-NX	Certus-NX	CertusPro-NX	MachXO5-NX (Control)	CrossLink-NX-33
SGMII and Gb Ethernet PCS	-	-	-	✓	✓	✓	✓	-
10 Gb Ethernet MAC	-	-	-	-	-	✓	-	-
Tri-Speed Ethernet MAC	-	-	-	✓	✓	✓	✓	-

Lattice Propel FPGA Design Tools

Design Tool	Key Features
Lattice Diamond	Optimized and tailored design and verification environment for Lattice FPGAs featuring fast iteration run times with comprehensive design constraints, advanced optimization, accurate analysis, and extensive verification.
Lattice Radiant	Full featured, easy to use Tool Suite, Lattice Radiant software offers all the best-in-class tools and features to help users develop their FPGA applications efficiently and effectively.

Lattice Propel Licensing Information

Design Tool	Licensing Terms
Lattice Propel	1-year free node-locked license available at www.latticesemi.com/licensing Features include access to both Diamond and Radiant

