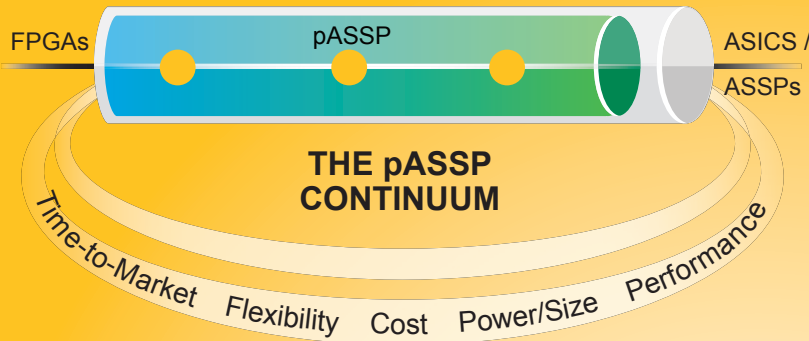


INTRODUCING LATTICE'S NEW CROSSLINK™ SOLUTION

The World's First Programmable ASSP (pASSP™) Interface Bridge for Mobile Image Sensors and Displays

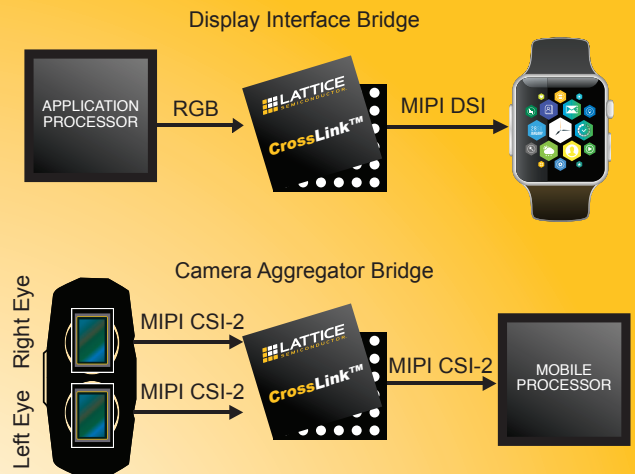
WHAT IS A pASSP?



Combines the flexibility and fast time to market of an FPGA with the power and functional optimization of an ASSP to deliver the best of both worlds

WHY CROSSLINK?

Solves the problem of interface mismatches



LATTICE VS. THE COMPETITION

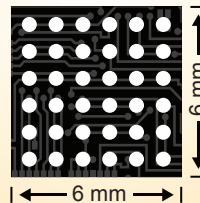
50%

Higher I/O performance at 12 Gbps



2X – 3X

Smaller footprint with 6 mm² option



20% – 50%

Lower power in active mode



BRIDGING THE VIDEO CONNECTIVITY GAP

One Bridge. Endless Possibilities.



Wearables/VR



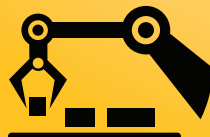
Drones



Surveillance



Smartphones



Machine Vision



Handheld Equipment

HiSpi
FPD-LINK
CMOS
MIPI DPI
MIPI CSI-2
OpenLDI
SubLVDS

LVDS
MIPI DSI
MIPI D-PHY
MIPI DBI
FLATLINK
SLVS200