

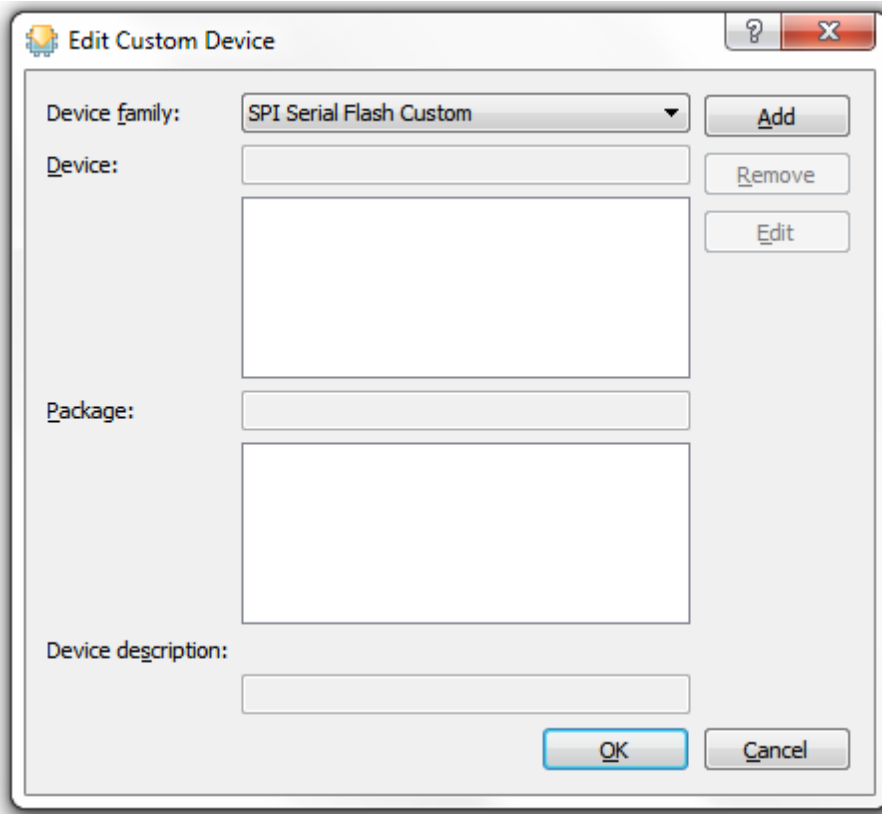
ECP5 Evaluation Board Flash Programming Instructions

These instructions can be used to program the Flash memory on the ECP5 Evaluation Board for versions of Lattice Diamond before version 3.10, service pack 3.

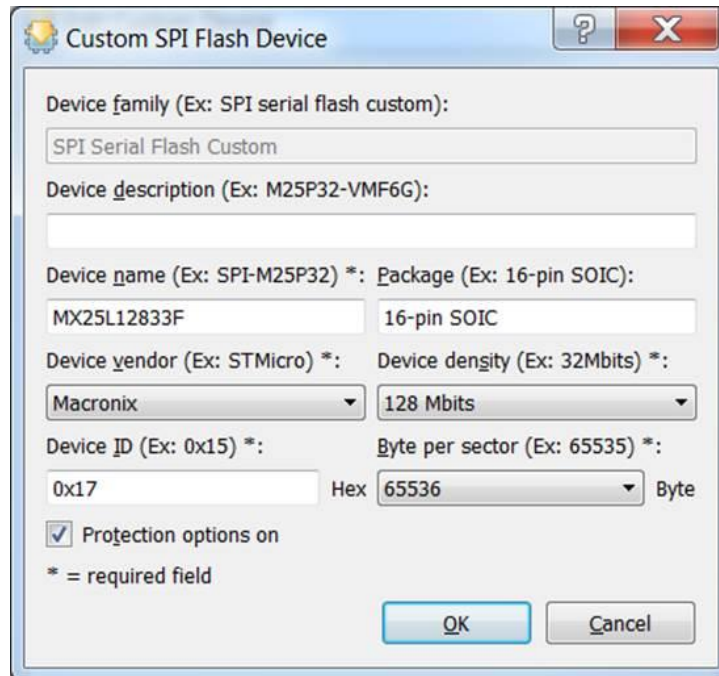
SPI Flash Device Selection in Programmer

The Flash device on this board is a Macronix MX25L12833F. This device is supported in Lattice Diamond 3.10SP3 and later. If the Flash is to be programmed on an earlier version, it will need to be added as a custom device. The following steps show how to create a custom device in Diamond Programmer.

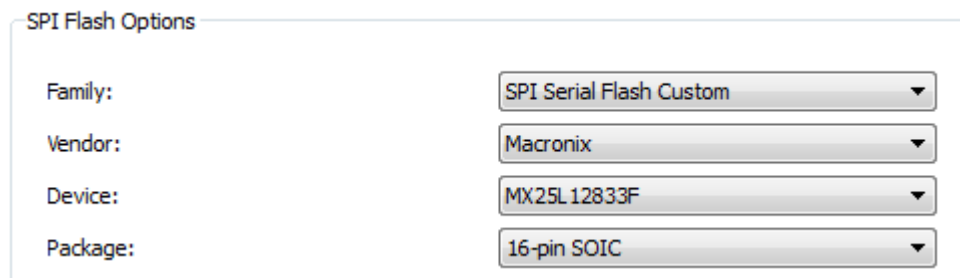
1. From Lattice Diamond main GUI, choose **Tools > Programmer**. Or click the **Programmer** icon from the toolbar to invoke Lattice Diamond Programmer
2. In **Programmer**, choose **Edit > Custom Devices**. The **Edit Custom Device** dialog pops up



3. Choose **SPI Serial Flash Custom** from the drop-down menu of the **Device family** area. Click **Add**.
4. In the pop-up **Custom SPI Flash Device** dialog, enter contents in the six fields as shown below. Check the **Protection options on** option. Click **OK**.



5. In **Programmer**, choose **Edit > Device Properties**.
6. From the pop-up **Device Properties** dialog, choose **SPI Serial Flash Custom** from the **Family**: field of the **SPI Flash Options** area (as shown below). You can find the custom device added.



7. Proceed with Flash programming as instructed in [ECP5 and ECP5-5G sysCONFIG Usage Guide \(FPGA-TN-02039\)](#)